

Different Health Initiatives/ Programs by Government and Non-Government Agencies

S. No.	Program	Executing Agency	Purpose
1	Expanded Program on Immunization (EPI)	Ministry of Health, Government of Pakistan	Vaccination of children
2	Women Health Project	Ministry of Health, Government of Pakistan	Improving health status of the women through up gradation of health facilities and training of health personnel
3	National Program for Family Planning and Primary Health Care	Ministry of Health Government of Pakistan	Providing linkage between health care outlets and users of health care through LHW
4	T. B. DOTS	Ministry of Health, Government of Pakistan	T B Control
5	Saving Newborn Lives Initiative	Save the Children-US	Saving the lives of the children through training of the health personnel and community participation
6	Pakistan Initiatives for Mothers and Newborn (PIAMAN)	Consortium led by JSI Research and Training Institute	Reduce maternal, newborn, and child mortality in Pakistan
7	Family Advancement for life and Health (FALAH)	Consortium led by Population Council	Child birth spacing

This publication was prepared by the Centre for Peace and Development Initiatives with support from United States Agency for International Development, via the TACMIL Health Project implemented by Abt Associates. The opinions expressed herein are those of author(s) and do not necessarily reflect the views of Abt Associates Inc., The TACMIL Health project, the U.S. Agency for International Development or the United States government.

Centre for Peace and Development Initiatives

Address: 105, Park Towers, F10/3 Islamabad

Tel: 051-2108287, 4319430

Fax: 051-2101594

 Email: info@cpdi-pakistan.org

 URL: www.cpdi-pakistan.org

Health Profile District Jhelum



Geography

District Jhelum is situated in the North-East of the province of the Punjab in Pakistan. It spreads over both sides of the Grand Trunk (GT) Road. It is bound in the North by Rawalpindi District, in the South by Mandi Baha-ud-Din, Gujrat and Sargodha, in the East by Azad Jammu and Kashmir and in the West by Chakwal and Khushab from which it is separated by the mountain range called the Kohistan-e-Namak.

Basic Statistics:

Population	936,957
Area	3587 Sq Km
Annual population growth	1.61
Life expectancy at Birth	61
Adult literacy rate	64% (M=78 %, F=59%)
Population density	261 persons/ Sq Km
Population Urban/ rural divide	27 % / 73 %
Crude death rate	9 per 1000
Crude birth rate	30 per 1000
Fertility rate	4.1
Infant mortality rate	59 (per 1000)
Under 5 mortality rate	89

District Government

Jhelum is divided in 4 tehsils namely Tehsil Jhelum, Tehsil Dina, Tehsil Pind Dadan Khan and Tehsil Sohawa. There are 54 union councils in district Jhelum and its breakdown is as follow:

Name of Tehsil	No. of Union Council
Jhelum	17
Dina	11
Sohawa	10
Pind Dadan Khan	16

Types of Health Facilities

There are six different types of health facilities in district Jhelum. Their tehsil wise breakdown is as under:

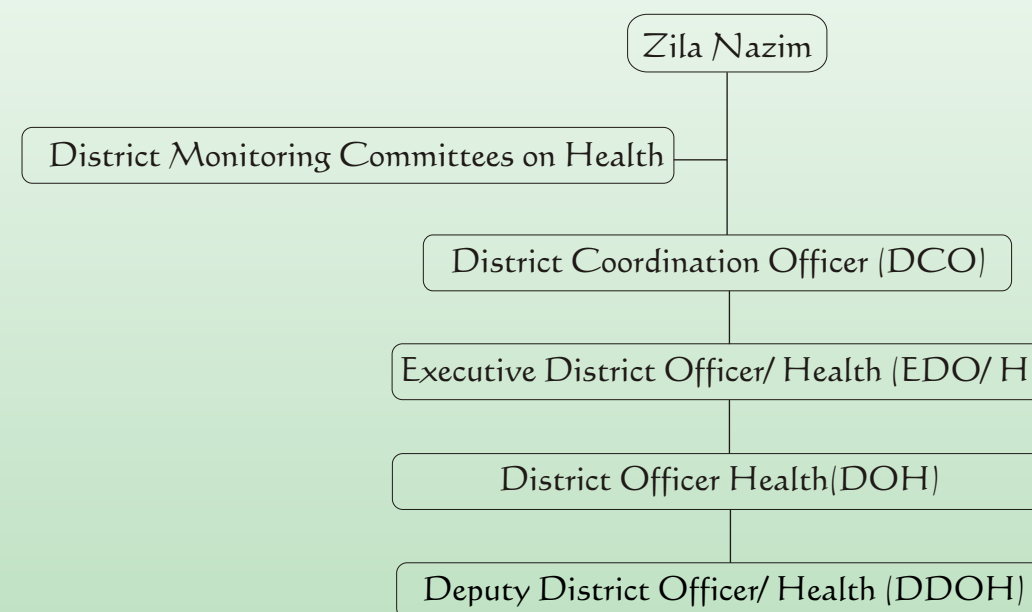
Tehsil	District Headquarter Hospital	Tehsil Headquarter Hospital	Rural Health Centre	Basic Health Unit	Maternity & Child Health Centre	Dispensary	Total
Jhelum	1	0	1	10	3	5	20
Dina	0	0	1	09	0	2	12
Sohawa	0	1	1	12	1	7	22
P D Khan	0	1	2	14	2	8	27
Total	1	2	5	45	6	22	81

*Source: Executive District officer/ Health, Jhelum

Some Critical Ratios

Doctors ratio	1 doctor for 9645 persons
Nurses ratio	1 nurse for 25261 persons
Hospital bed ratio	1 bed for 1583 persons

District Health Administration



Health Budget Allocation in Previous Years

Year	Total Health Budget (Million Rs.)	Percentage increase (from previous year)
2001-2	114.6	-
2002-3	126.7	9.6
2003-4	153.8	17.6
2004-5	158.0	2.7
2005-6	170.4	7.3
2006-7	233.0	26.9
2007-8	242.5	3.9
2008-9	252.6	4.0